



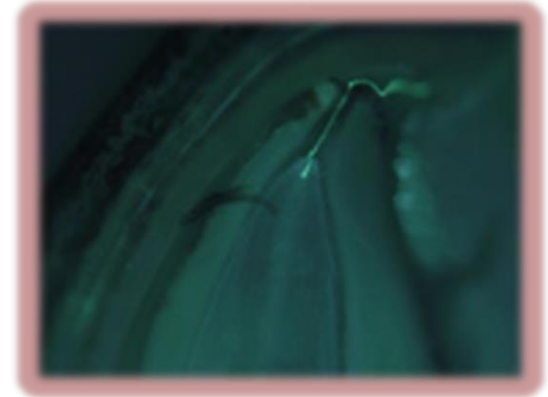
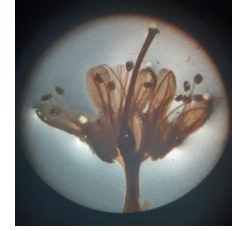
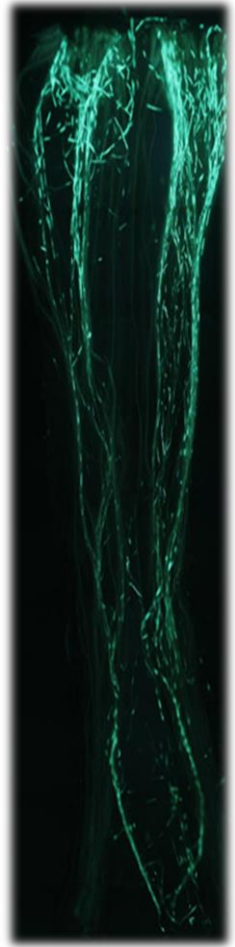
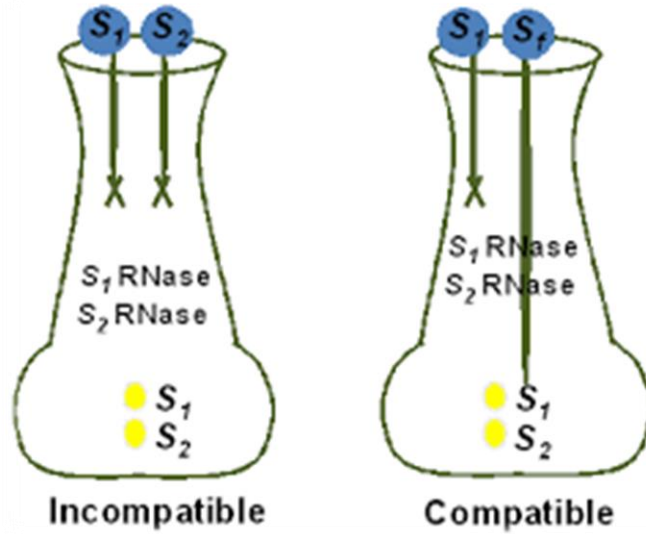
**Fond za nauku Republike
Srbije – Program IDEJE**

**PRAVILAN IZBOR GLAVNIH SORTI I OPRAŠIVAČA
U ZASADIMA TREŠNJE I VIŠNJE KAO PREDUSLOV
OPTIMALNE I REDOVNE RODNOSTI U USLOVIMA
IZMENJENE KLIME**

dr Sanja RADIČEVIĆ
Institut za voćarstvo, Čačak

CherrySeRB

✓ **Međusobno kompatibilne sorte!!!**



'Regina'



'E. C. Van'



S_1S_3

'Vera'



S_1S_2

'S. H. Giant'



'Summit'



'Kanada Giant'



S_3S_9

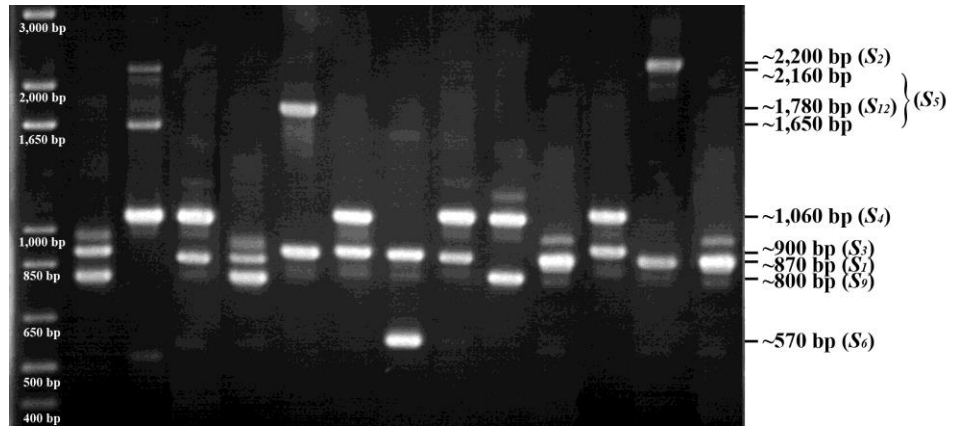
'Souvenir'

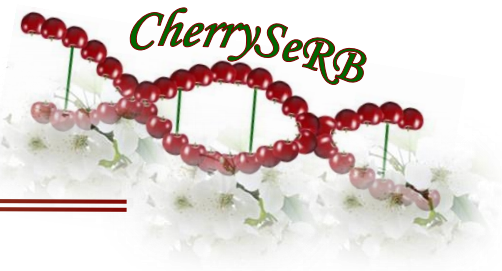


'Burlat'

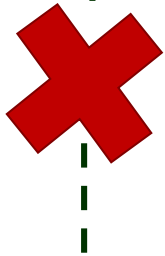
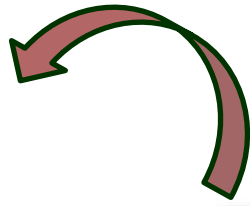


'Tieton'





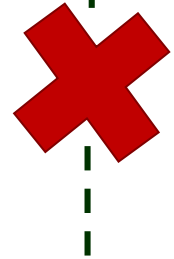
S_3S_4



Marić i Radičević, 2014
Radičević et al., 2015



S_3S_{12}



‘Germersdorfer’
(‘Erc’)

‘Bing’
‘Napoleon’
‘Lambert’
‘Karina’
....

‘Linda’
‘Ferrovia’
‘Ziraat 0900’
....

✓ U komercijalnim zasadima se preporučuje
bar jedna samooplodna sorta!!!

‘Early Star’ (S_4, S_9)



‘Grace Star’ (S_4, S_9)



($S_3 S_4$)
‘Sandra Rose’



‘Celeste’ ($S_1 S_4$)



‘Compact Stella’ ($S_3 S_4$)



‘Big Star’ (S_4, S_9)



‘Alex’
($S_3 S_3$)

($S_3 S_4$)
‘Staccato’



‘Sunburst’ ($S_3 S_4$)

‘Lapins’
($S_1 S_4$)

‘New Star’



**Da li se samooplodne sorte višnje mogu
gajiti monosortno?**



‘Šumadinka’
(‘Köröser’ × ‘Heimanns K.W.’)



‘Oblačinska’



**HAJMANOVA
KONZERVNA**



CherrySeRB

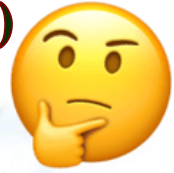
‘Érdi Bötermö’
(‘Pandy 38’ × ‘Nagy Angol’)



‘Rexelle’



‘Érdi Jubileum’
(‘Pandy’ × ‘Eugenia’)



‘Újfehértói Fürtös’



‘Kelleriis 14’



‘Maliga Emleke’
(‘Pandy’ × ‘Eugenia’)

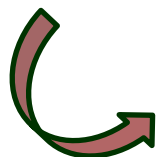
‘Sofija’
(‘Č. rubin’ × ‘Heimanns K.W.’)

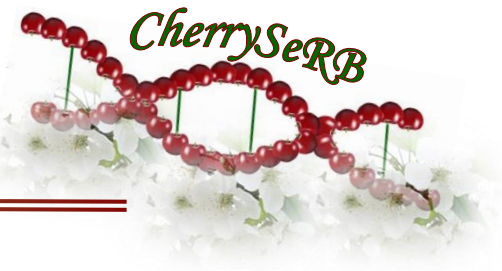


‘Nevena’
(‘Köröser’ × ‘Heimanns K.W.’)



‘Iskra’
(‘Köröser’ × ‘H. Rubin’)

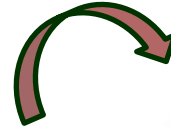




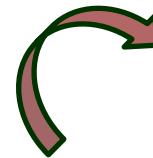
'Feketička'



'GV-6'



'GV-10'



'Lenka'





'Köröser'



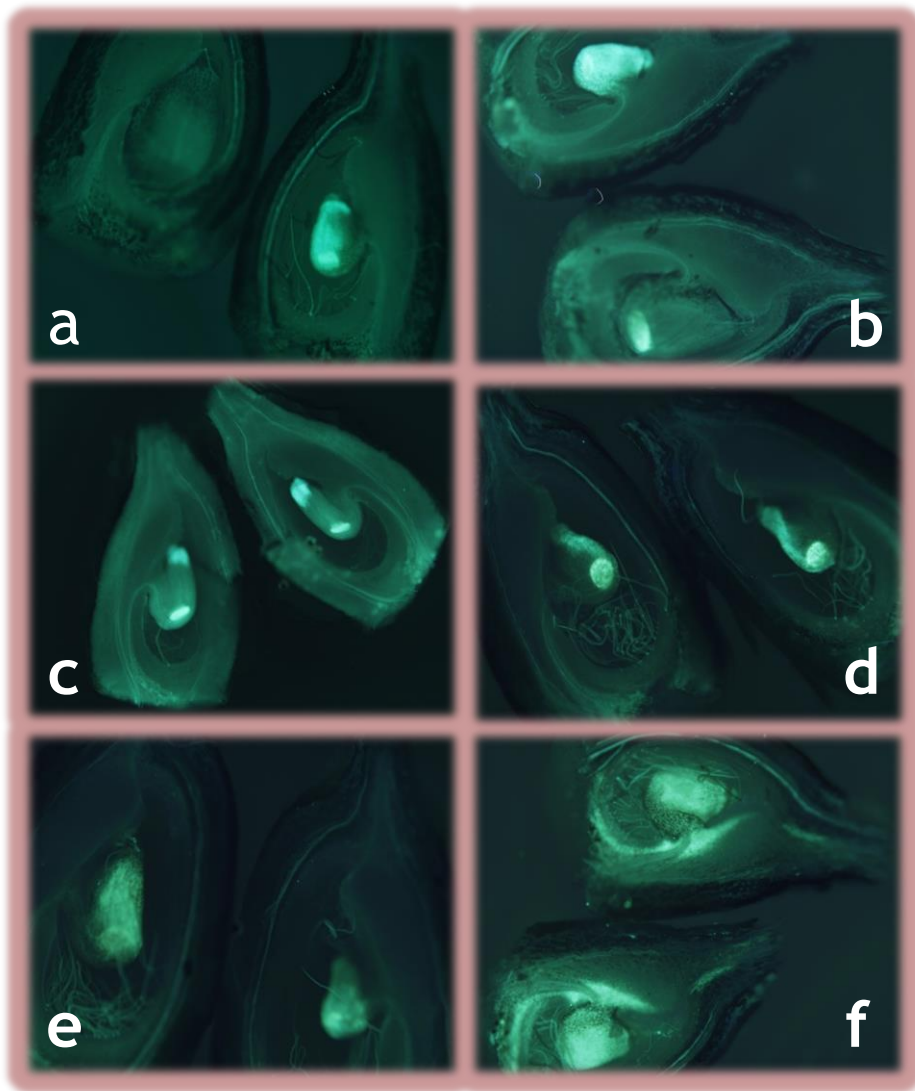
$S_1 S_4 S_{35} S_{36b}$



'Petri'

'Kántorjánosi 3'

✓ **Vitalnost semenih zametaka - prilagođenost sorte agroekološkim uslovima u reproduktivnom smislu!!!**



S_3S_6

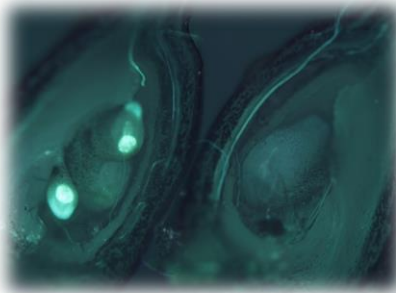
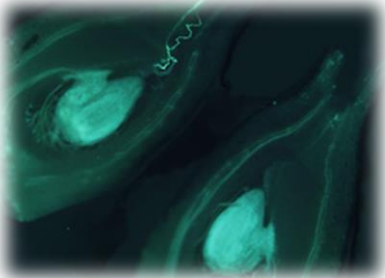
'Kordia'

vs.

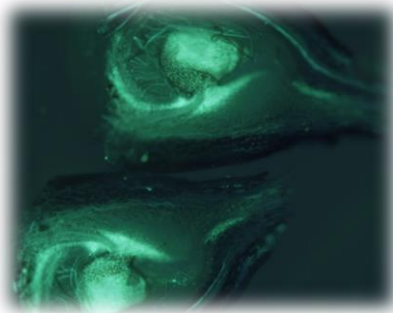
'Regina'



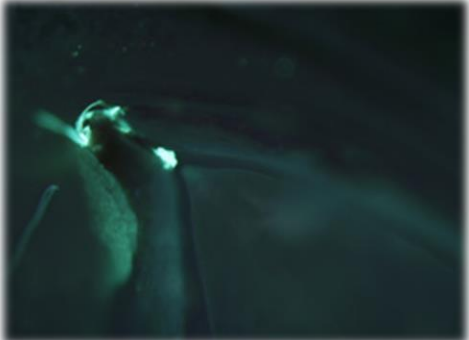
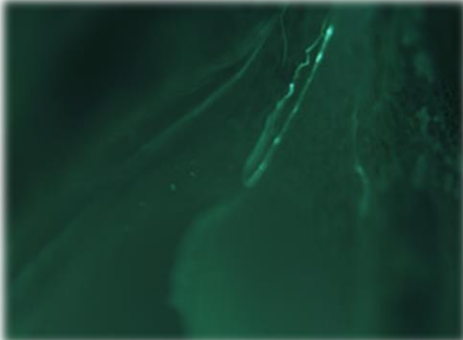
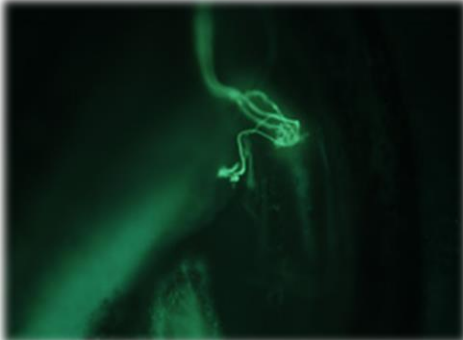
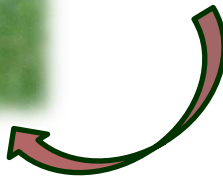
S_1S_3

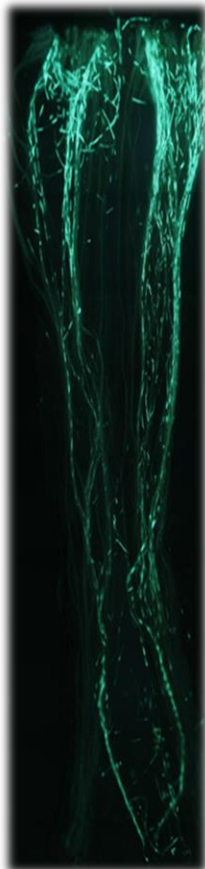
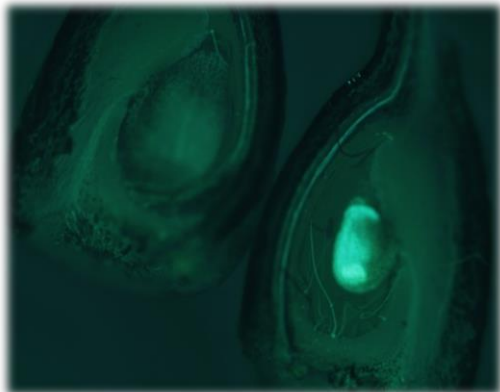


'Karmen'!!!



S₄S₅





Efektivni period polinacije



5–7 dana



- ❖ Period receptivnosti žiga ↘
- ❖ Brzina rasta polenovih cevčica ↗
- ❖ Vitalnost semenih zametaka ↘

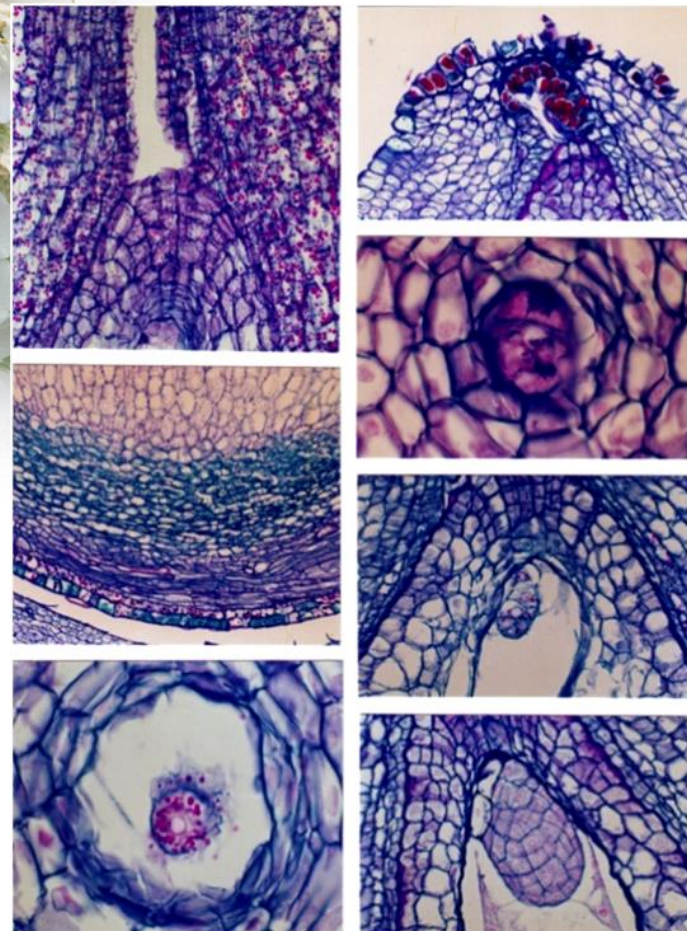


EPP ↘



'Čačanski rubin'

('Shasse Morello' × 'Köröser')



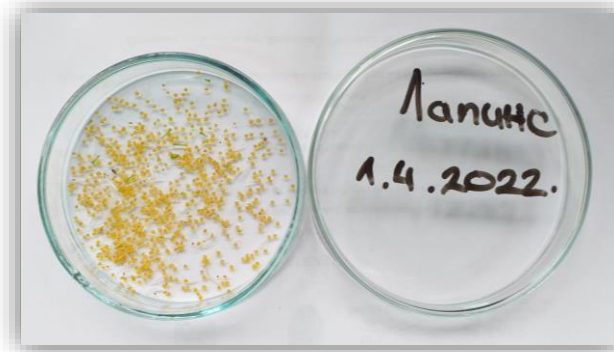
✓ Kvalitet polena!!!



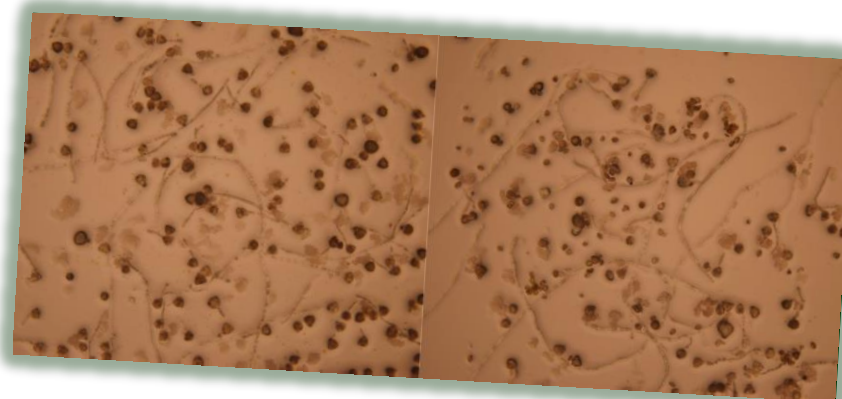
Trešnja
25–50%



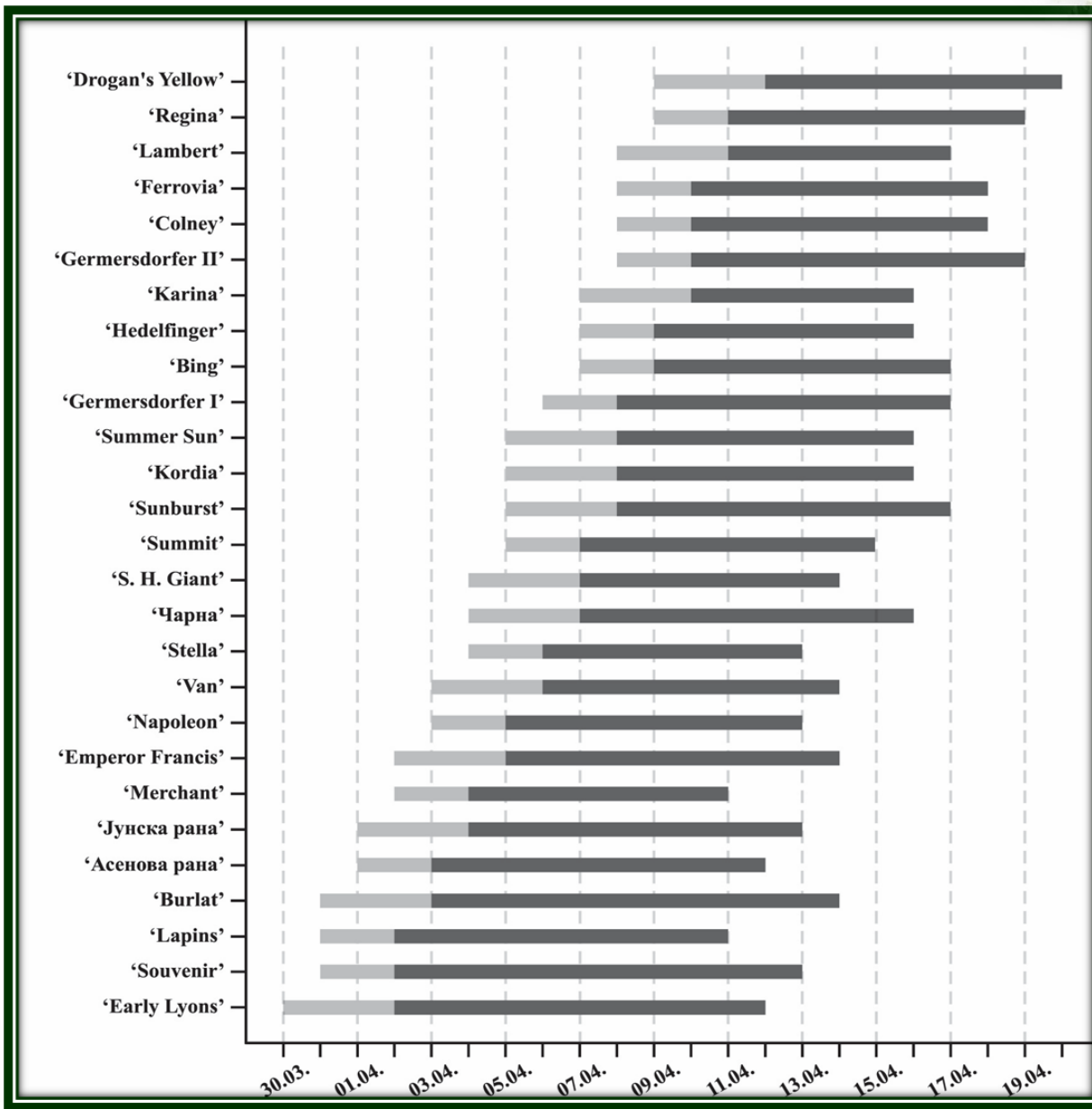
Višnja
20–40%



Marele!!!



✓ Preklapanje u vremenu cvetanja!!!





Cultivar ♀	♂																										
	'Early Lyons'	'Souvenir'	'Lapins'	'Burlat'	'Asenova Rana'	'Junska Rana'	'Merchant'	'E. Francis'	'Napoleon'	'Van'	'Stella'	'Čarna'	'S. H. Giant'	'Summit'	'Sunburst'	'Kordia'	'Summer Sun'	'Germersdorfer I'	'Bing'	'Hedelfinger'	'Karina'	'Germersdorfer II'	'Colney'	'Ferrovia'	'Lambert'	'Regina'	'Drogan's Yellow'
'Early Lyons'	⊗	†	‡	†	†	†	†	‡	‡	‡	‡	‡	‡	‡	†	†	†	‡	‡	‡	‡	†	‡	‡	‡	‡	‡
'Souvenir'	†	⊗	‡	⊗	⊗	⊗	†	†	†	†	†	‡	‡	‡	†	†	†	†	†	†	†	†	†	†	†	†	†
'Lapins'	‡	‡	†	‡	‡	‡	†	†	†	†	‡	⊗	†	†	‡	‡	†	†	†	‡	†	‡	‡	‡	†	†	†
'Burlat'	†	⊗	‡	⊗	⊗	⊗	†	†	†	†	†	‡	‡	‡	†	†	†	†	†	†	†	†	†	†	†	†	†
'Asenova Rana'	†	⊗	‡	⊗	⊗	⊗	†	†	†	†	†	‡	‡	‡	†	†	†	†	†	†	†	†	†	†	†	†	‡
'Junska Rana'	†	⊗	‡	⊗	⊗	⊗	†	†	†	†	†	‡	‡	‡	†	†	†	†	†	†	†	†	†	†	†	†	‡
'Merchant'	†	†	‡	†	†	†	⊗	†	†	‡	‡	†	‡	‡	‡	‡	⊗	†	†	‡	†	‡	‡	‡	†	‡	‡
'E. Francis'	‡	†	‡	†	†	†	†	⊗	⊗	†	†	†	‡	‡	†	†	†	⊗	⊗	†	⊗	†	‡	†	⊗	†	‡
'Napoleon'	‡	†	‡	†	†	†	†	⊗	⊗	†	†	†	‡	‡	†	†	†	⊗	⊗	†	⊗	†	‡	†	⊗	†	‡
'Van'	‡	†	†	†	†	†	‡	†	†	⊗	†	†	†	†	†	†	†	†	†	†	†	†	†	†	†	⊗	†
'Stella'	‡	†	‡	†	†	†	†	⊗	⊗	†	†	†	‡	‡	‡	†	†	⊗	⊗	†	⊗	†	‡	†	⊗	†	‡
'Čarna'	‡	‡	†	‡	‡	‡	†	†	†	†	†	‡	⊗	†	†	†	†	†	†	‡	†	‡	‡	‡	†	†	†
'S. H. Giant'	‡	‡	†	‡	‡	‡	‡	‡	‡	†	‡	†	⊗	⊗	‡	‡	‡	‡	‡	‡	‡	‡	‡	‡	‡	†	†
'Summit'	‡	‡	†	‡	‡	‡	‡	‡	‡	†	‡	†	⊗	⊗	‡	‡	‡	‡	‡	‡	‡	‡	‡	‡	‡	†	†
'Sunburst'	‡	†	‡	†	†	†	†	⊗	⊗	†	†	†	‡	‡	†	†	†	⊗	⊗	†	⊗	†	‡	†	⊗	†	‡
'Kordia'	†	†	‡	†	†	†	‡	†	†	†	†	‡	‡	‡	†	⊗	‡	†	†	†	†	†	†	†	†	†	‡
'Summer Sun'	†	†	‡	†	†	†	⊗	†	†	‡	‡	†	‡	‡	‡	‡	⊗	†	†	‡	†	‡	‡	‡	†	‡	‡
'Germersdorfer I'	‡	†	‡	†	†	†	†	⊗	⊗	†	†	†	‡	‡	†	†	†	⊗	⊗	†	⊗	†	‡	†	⊗	†	‡
'Bing'	‡	†	‡	†	†	†	†	⊗	⊗	†	†	†	‡	‡	†	†	†	⊗	⊗	†	⊗	†	‡	†	⊗	†	‡
'Hedelfinger'	‡	†	‡	†	†	†	‡	†	†	†	†	‡	‡	‡	†	†	‡	†	†	⊗	†	†	†	†	†	†	†
'Karina'	‡	†	‡	†	†	†	†	⊗	⊗	†	†	†	‡	‡	†	†	†	⊗	⊗	†	⊗	†	‡	†	⊗	†	‡
'Germersdorfer II'	‡	†	‡	†	†	†	‡	†	†	†	†	‡	‡	‡	†	†	‡	†	†	†	†	⊗	‡	⊗	†	†	‡
'Colney'	†	‡	‡	‡	‡	‡	‡	‡	‡	‡	‡	‡	‡	‡	†	‡	‡	‡	†	‡	‡	‡	⊗	‡	‡	‡	†
'Ferrovia'	‡	†	‡	†	†	†	‡	†	†	†	†	‡	‡	‡	†	†	‡	†	†	†	†	⊗	‡	⊗	†	†	‡
'Lambert'	‡	†	‡	†	†	†	†	⊗	⊗	†	†	†	‡	‡	†	†	†	⊗	⊗	†	⊗	†	‡	†	⊗	†	‡
'Regina'	‡	†	†	†	†	†	‡	†	†	⊗	†	†	†	†	†	†	‡	†	†	†	†	†	†	†	†	⊗	†
'Drogan's Yellow'	‡	‡	†	‡	‡	‡	‡	‡	‡	†	‡	†	†	†	‡	‡	‡	‡	‡	†	‡	‡	†	‡	‡	†	⊗





'Nimba' (-5)

(S₂S₃)



'Tamara' (+25)

(S₁S₉)

(S₂S₆)

'Korvik' (+28)



'Frisco' (+10)

(S₁S₄)



'Benton' (+18)

(S₄S₉)



✓ **Obezbediti prenosioce polena!!!**

✓ **Raspored sorti u zasadu!!!**

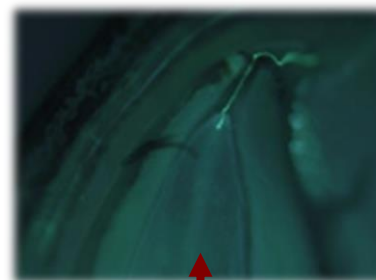
- zasad je višesortni
- u zasadu dominira jedna sorta

O X X X X X X X O X X X X X X X O X X ...
X X X X O X X X X X X X O X X X X X X ...
O X X X X X X X O X X X X X X X O X X ...

Odnos oprašivač (O) : glavna sorta (X) » 1:7-9
(klasični sistemi gajenja)

O X X X X X O X X X X X O X X X X X O ...
X X X O X X X X X O X X X X X O X X X ...
O X X X X X O X X X X X O X X X X X O ...

Odnos oprašivač (O) : glavna sorta (X) » 1:5
(gusta sadnja)



Postizanje optimalnog
zametanja plodova!!!
20-30% - trešnja
≥30% - višnja





Hvala na pažnji!!!

